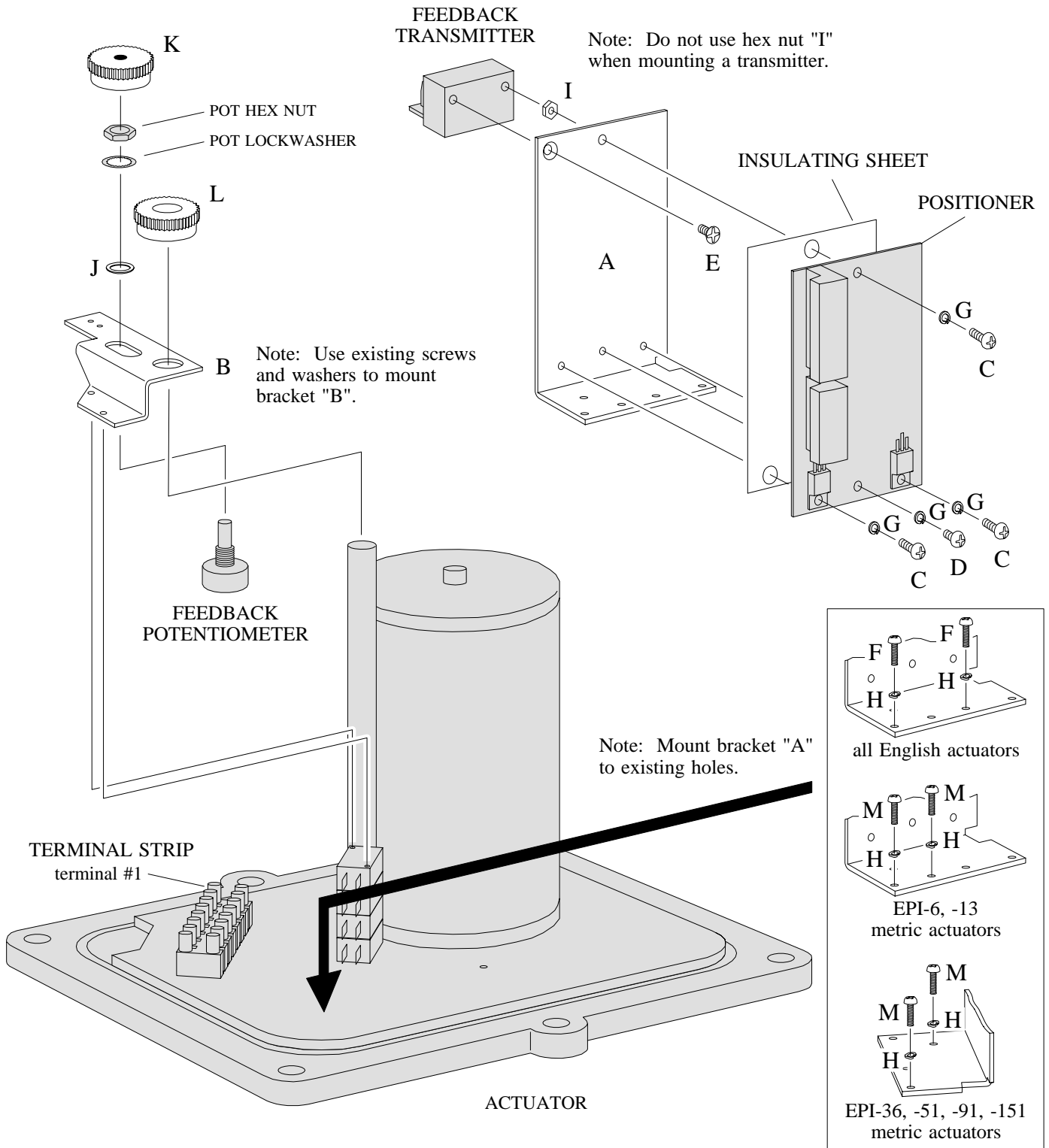


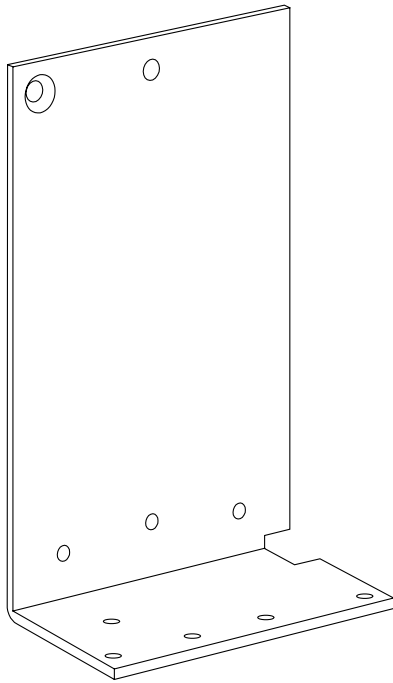
#### ASSEMBLY DIAGRAM

for

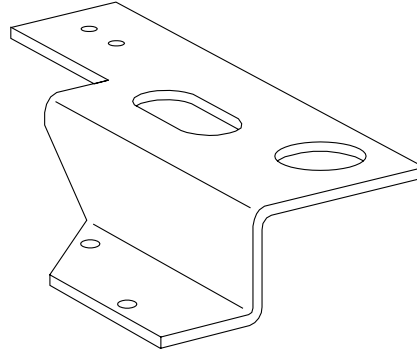
Tyco EPI-6, -13, -36, -51, -91, -151 Actuators



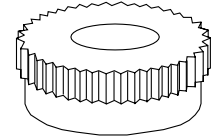
## KIT CONTENTS



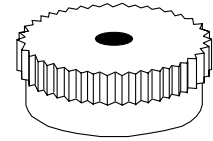
A



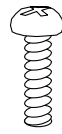
B



L



K



C



D



E



F



M



G



H



I



J

ITEM	QTY	DESCRIPTION
A	1	positioner bracket
B	1	feedback potentiometer bracket
C	3	#6-32 x 0.5" pan head screw
D	1	#6-32 x 0.375" pan head screw
E	1	#6-32 x 0.375" flat head screw
F	2	#4-40 x 0.375" pan head screw
G	4	#6 split ring lockwasher
H	2	#4 split ring lockwasher
I	1	#6-32 hex nut
J	1	potentiometer anti-slip washer
K	1	potentiometer gear
L	1	output shaft gear
M	2	3mm/0.5mm x 8mm pan head screw
not shown	2	13" black wire
not shown	1	13" red wire
not shown	1	13" white wire
not shown	1	10" yellow wire
not shown	1	10" blue wire w/spade terminal
not shown	1	10" red wire w/spade terminal
not shown	4	6.3" nylon tie wrap

\* Refer to Tyco drawings BW-1301 and BW-1302 for wiring information.