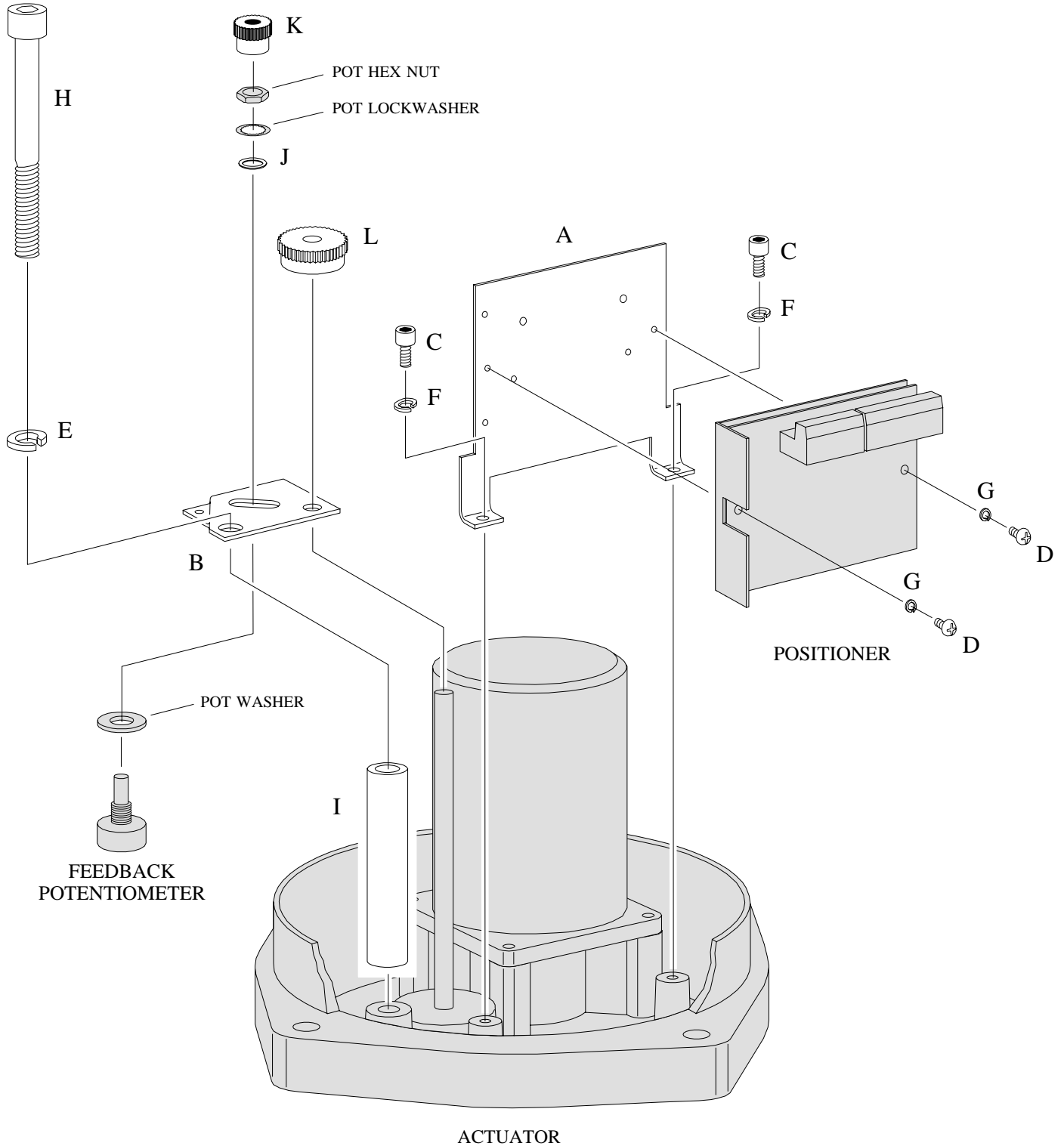
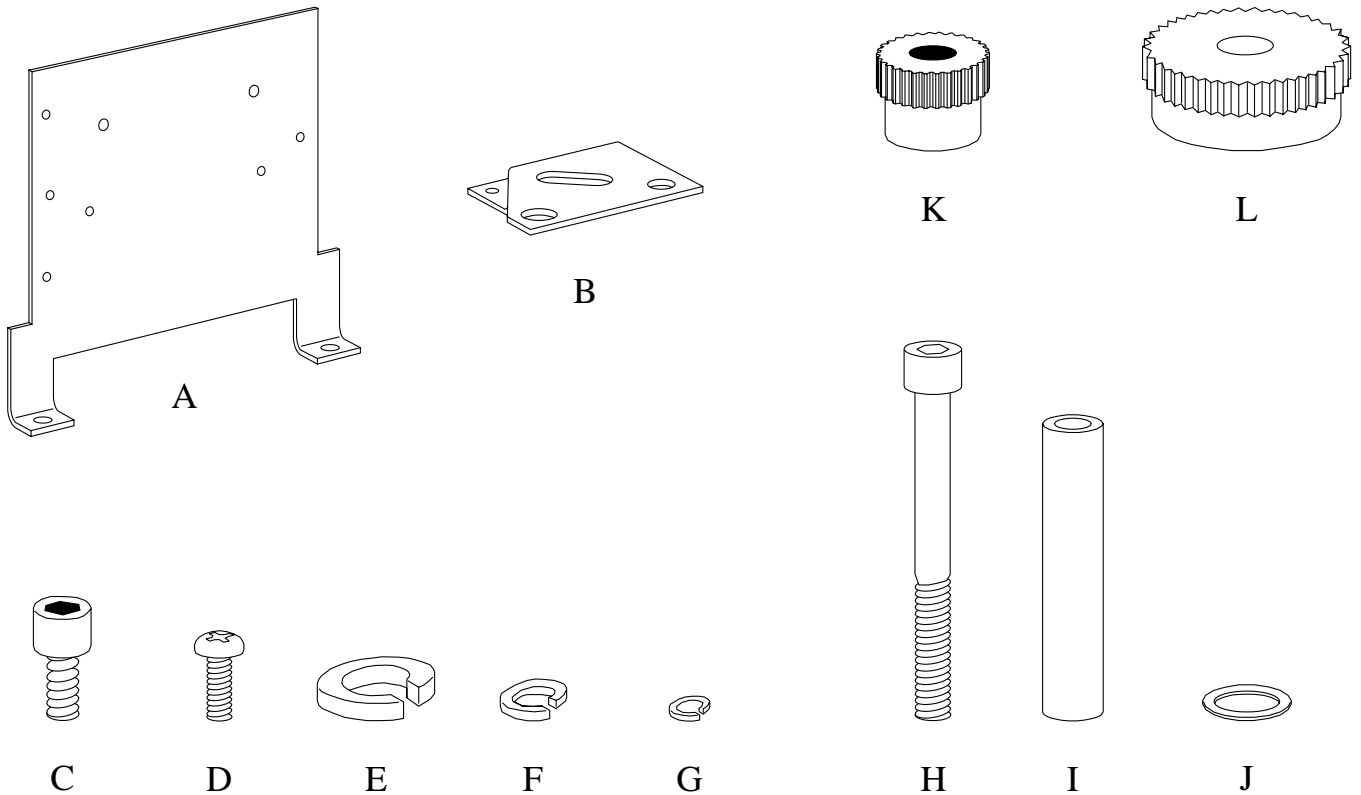


ASSEMBLY DIAGRAM

HKC HQ-015, -020, -030, -050, -060, -080, -120 Actuators



KIT CONTENTS



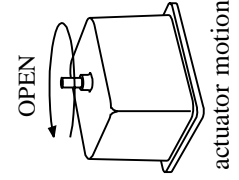
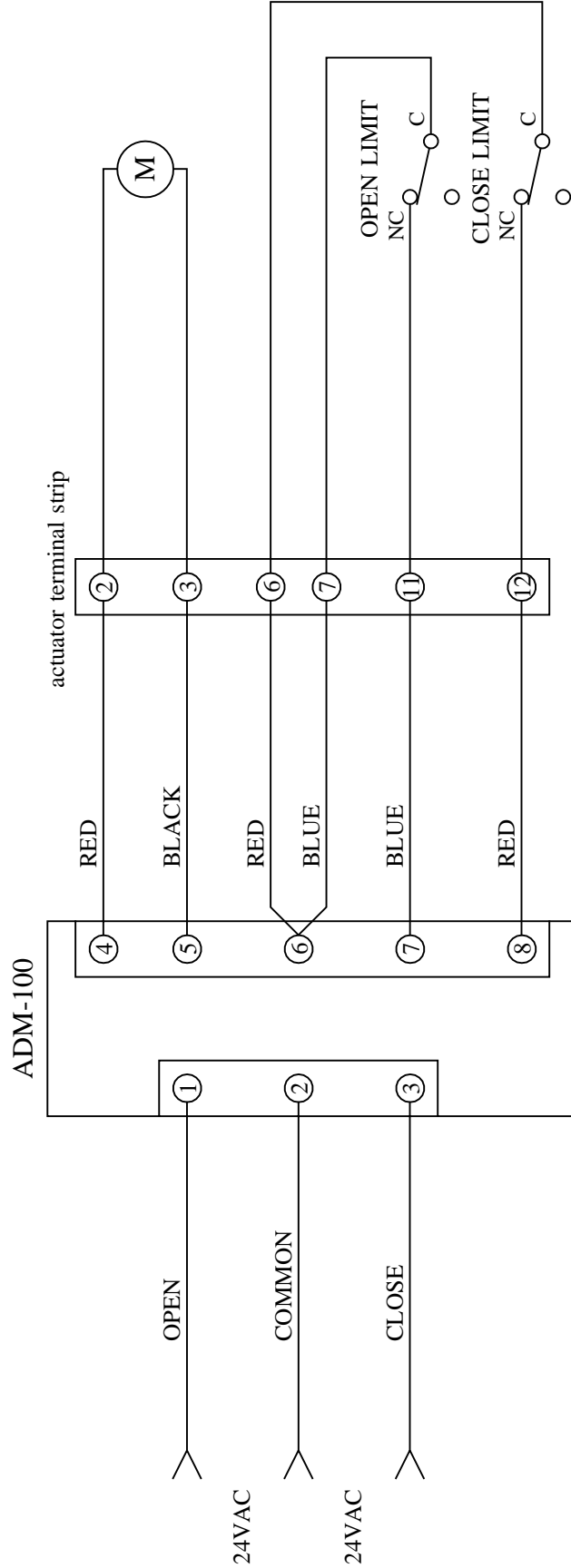
ITEM	QTY	DESCRIPTION
A	1	positioner bracket
B	1	potentiometer bracket
C	2	5mm/0.8mm X 10mm socket head cap screw
D	2	#6-32 X 0.375" pan head screw
E	1	10mm split ring lockwasher
F	2	5mm split ring lockwasher
G	2	#6 split ring lockwasher
H	1	10mm/1.5mm X 90mm socket head cap screw
I	1	3.1" round spacer
J	1	potentiometer anti-slip washer
K	1	potentiometer gear
L	1	output shaft gear
not shown	4	12" red wire
not shown	2	12" blue wire
not shown	1	12" white wire
not shown	2	12" black wire
not shown	4	6.3" nylon tie wrap

AC to DC MODULE

WIRING DIAGRAM

HKC HQ-015, -020, -030 Actuators

The ADM-100 AC to DC Module allows a 24VDC actuator to be controlled like a 24VAC split-phase motor actuator.

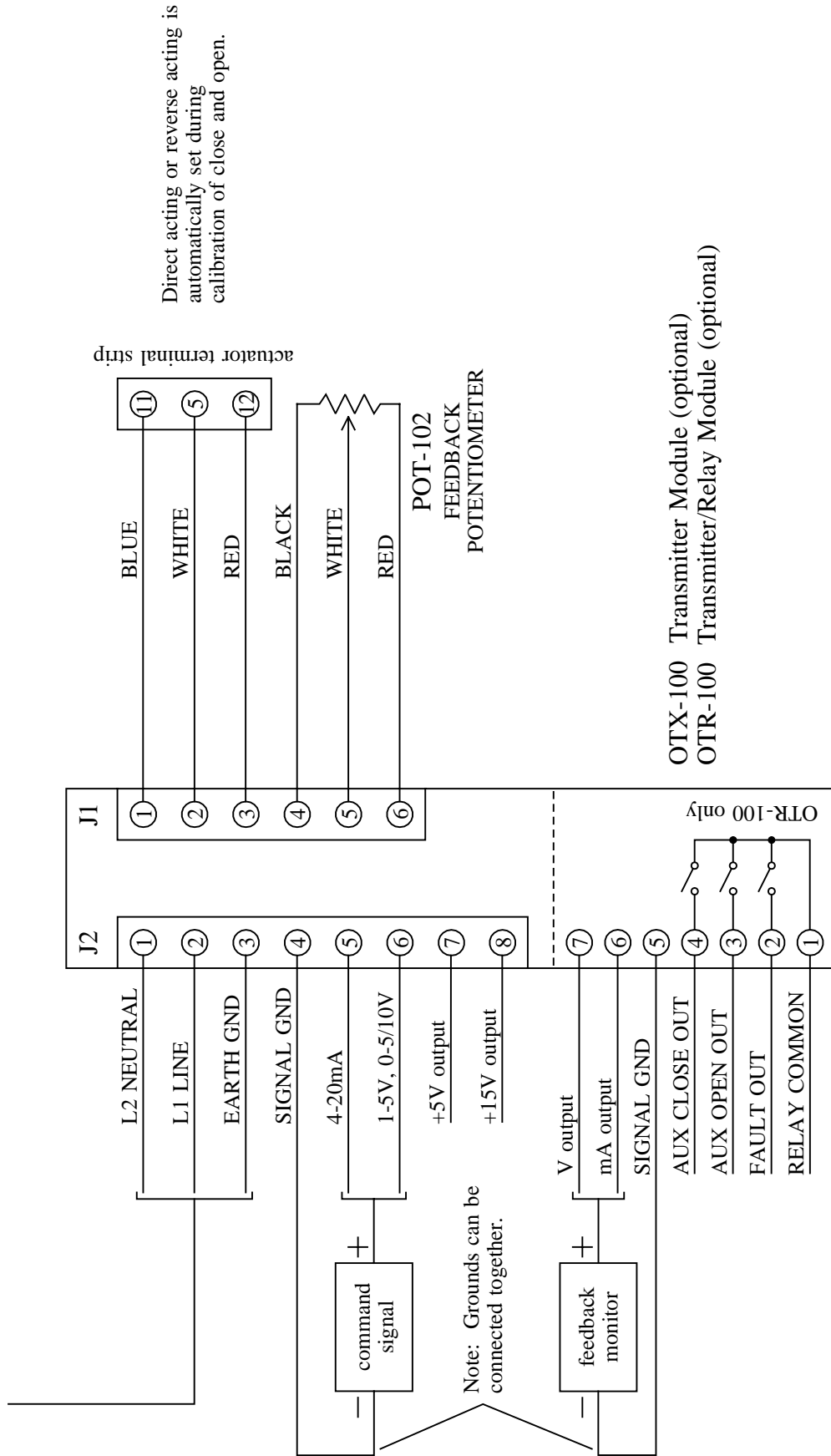


AC DIGITAL POSITIONERS

WIRING DIAGRAM

HKC HQ-015, -020, -030, -050, -060, -080, -120 Actuators

117VAC DHC-100
234VAC DHC-100A



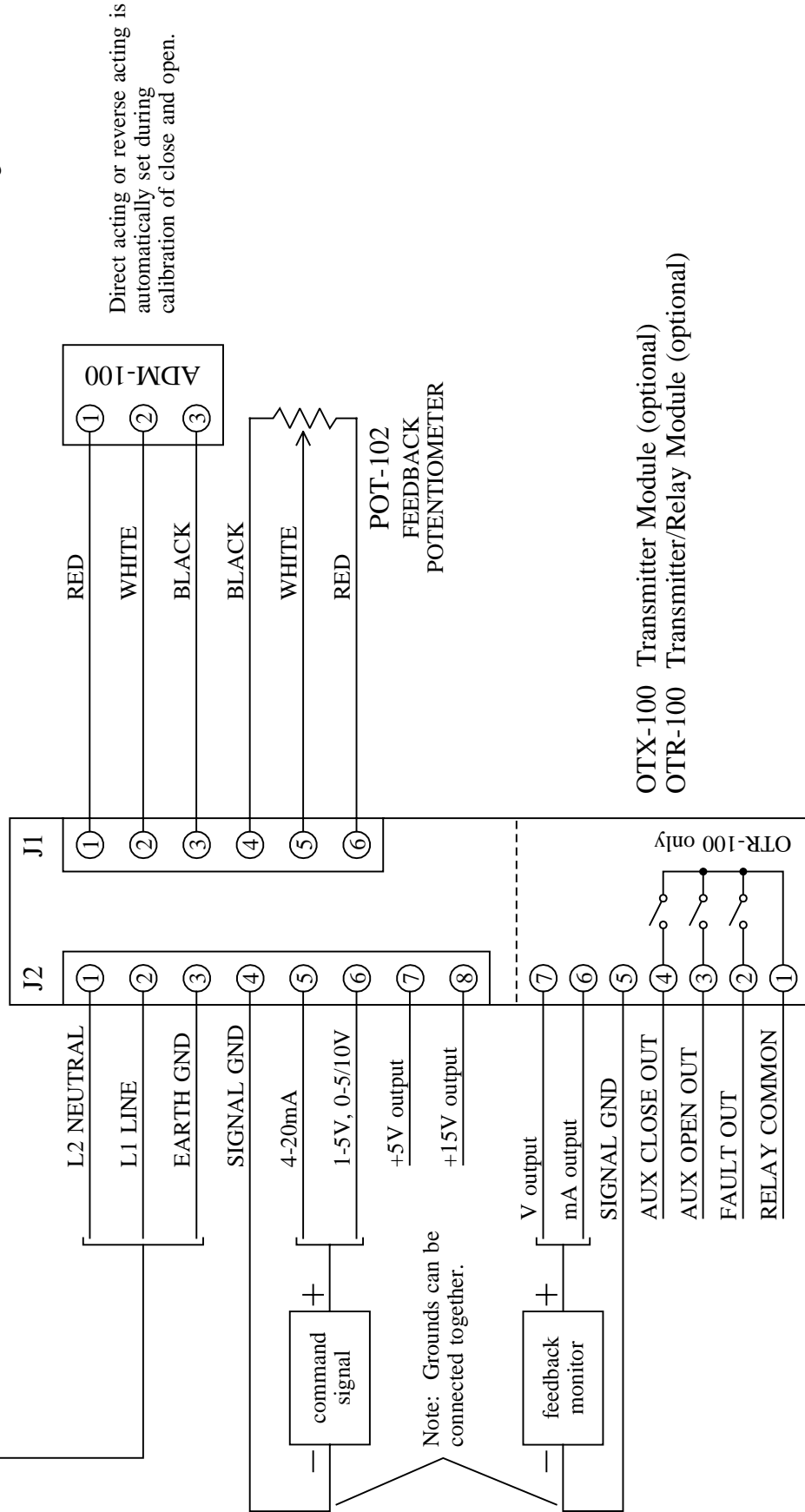
24VAC DIGITAL POSITIONER

WIRING DIAGRAM

HKC HQ-015, -020, -030 Actuators

24VAC DHC-100B

NOTE: This application uses a 24VDC actuator with an ADM-100 AC to DC Module installed. See ADM-100 wiring.



Note: Grounds can be connected together.

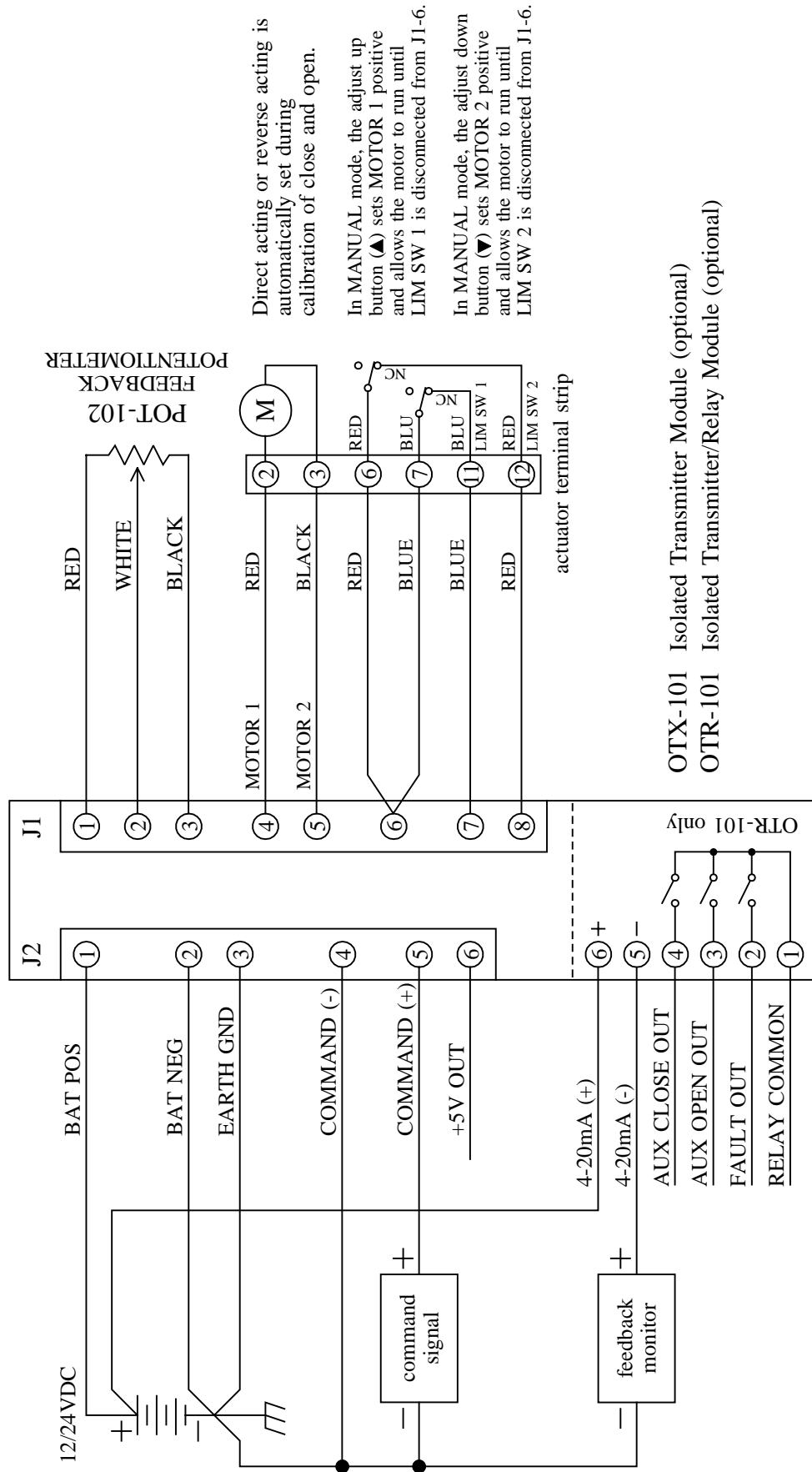
OTX-100 Transmitter Module (optional)
OTR-100 Transmitter/Relay Module (optional)

DC DIGITAL POSITIONER

WIRING DIAGRAM

HKC HQ-015, -020, -030 Actuators

DHC-400



Direct acting or reverse acting is automatically set during calibration of close and open.

In MANUAL mode, the adjust up button (▲) sets MOTOR 1 positive and allows the motor to run until LIM SW 1 is disconnected from J1-6.

In MANUAL mode, the adjust down button (▼) sets MOTOR 2 positive and allows the motor to run until LIM SW 2 is disconnected from J1-6.

OTX-101 Isolated Transmitter Module (optional)
 OTR-101 Isolated Transmitter/Relay Module (optional)